
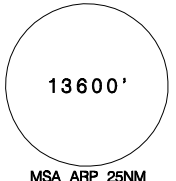
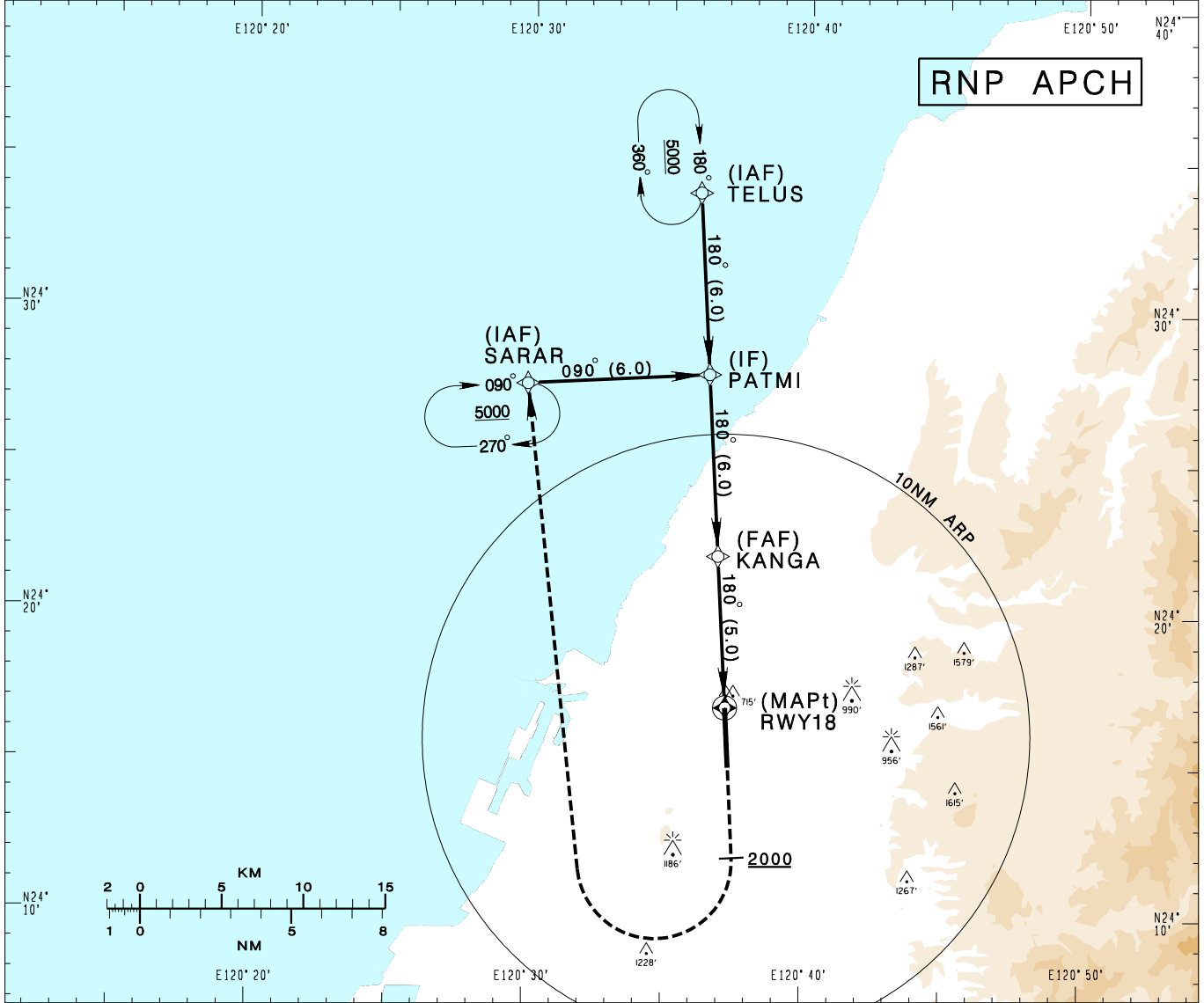


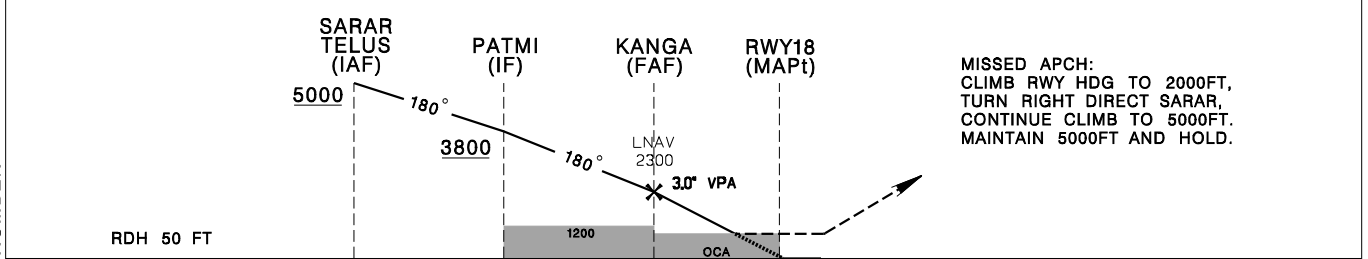
臺中/清泉崗機場
TAICHUNG/CINGCYUANGANG AD

RCMQ
RNP RWY18

TAIPEI APP 130.1 129.6	TAICHUNG TWR 118.75 120.25	ATIS 127.75				
Apt Elev: 665'		Rwy18 THR Elev: 653'			Trans Level: FL130	Trans Alt: 11,000'
BEARINGS ARE MAGNETIC; DISTANCES ARE NAUTICAL MILES; ELEVATIONS, HEIGHTS IN FEET						



5	4	3	2	1	DIST (NM) to THR 18
KANGA					DIST (NM) to Next WPT
2300	1980	1660	1340	1030	ADVISORY ALT



MINIMA (OCA IN FT, VIS IN M, OCH IN FT)		NOTE			
CATEGORY		A	B	C	D
LNAV/VNAV	STRAIGHT IN	950/ 1400 RVR1400 297	950/ 1400 RVR1400 297	950/ 1400 RVR1400 297	950/ 1400 RVR1400 297
LNAV	STRAIGHT IN	980/1600 327	980/1600 327	980/1600 327	980/1600 327

NOTE
1. CAUTION OBSTACLES (TREES) UP TO 715FT PENETRATE THE VISUAL SEGMENT SURFACE (VSS).
2. BARO-VNAV NOT AUTHORIZED BELOW 0° C.

CHANGES: NEW PAGE NUMBER